



HUNTINGTON ARTS COUNCIL

## *Nightmare on Main Street*



## Artist Biographies and Statements



## Charlotte Tsekerides



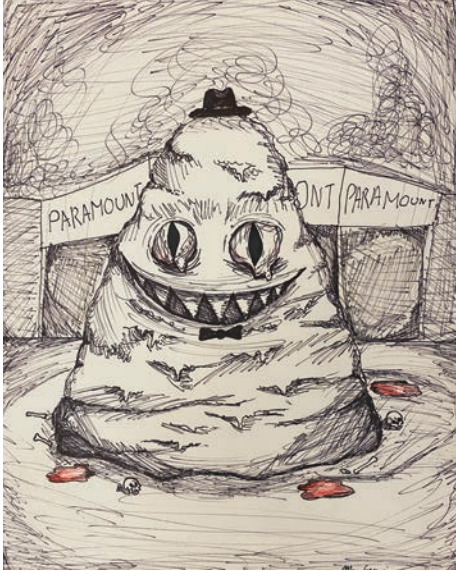
*Falling Into Nothingness*  
Mixed Media, 11" x 14"  
Cold Spring Harbor Jr/Sr High School  
NFS

### **Artist Statement:**

With my piece, I hope to communicate the feeling of losing oneself completely, even when one doesn't want to. In addition, the safety pins are there to represent trying to mend a situation by temporary means.



## Mary Getzoni



*Mainstreet Monster*  
Mixed Media, 9" x 12"  
Cold Spring Harbor Jr/Sr High School  
\$70

### **Artist Statement:**

The message my art is communicating is the evilness in the monster. The monster is smiling in a cynical way as he is causing destruction to the things around him. The message is supposed to show how the monster has no sympathy and is evil.



## Elliot Rosenblatt



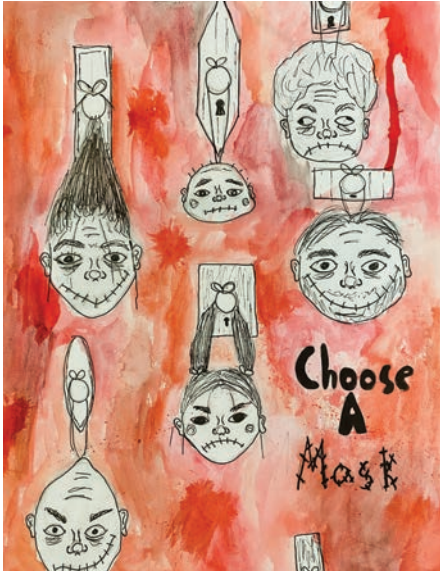
*Clowning Around Drawings*  
Mixed Media, 18" x 24"  
Cold Spring Harbor Jr/Sr High School  
NFS

### **Artist Statement:**

Horror has been a huge inspiration for many of my pieces, therefore in the piece *Clowning Among Drawings*, I decided to make a watercolor piece of my clown ventriloquist dummy I had owned, and put it within a scene as if he had fans. The drawings behind the clown are inspired by various ways that toddlers may have drawn this clown. The drawings behind the clown are made with a variety of tools like pastels, crayons, cheaper watercolor, and markers. Living among these cute yet eerie drawings may just be enough to drive anyone mad, or even insane....



## Meggie Baxter



*Choose A Mask*  
Mixed Media, 11" x 14"  
Cold Spring Harbor Jr/Sr High School  
\$60

### **Artist Statement:**

My art was inspired by many different creepy movies I have seen like the Adams family, Hotel Transylvania and more. In the drawing I was trying to convey all the creepy masks and or heads you could put on. All the heads are hanging on different doorknobs waiting to be picked. They have a different sort of look to all of them, one looks mad, while the other looks desperate.



## Bennett Vitagliano



*The Hollow*  
Mixed Media, 18" x 12"  
Cold Spring Harbor Jr/Sr High School  
\$100

### **Artist Statement:**

My piece, *The Hollow*, was inspired through a special event in my life. Growing up, I hunted with my father upstate in corn and wheat fields. The ominous feeling of walking in the fields, not knowing what is going to come out, gave me inspiration for the scare crow.



## Warren Wei



*One Way Sight*  
Mixed Media, 11" x 14"  
Cold Spring Harbor Jr/Sr High School  
NFS

### **Artist Statement:**

I drew inspiration for my piece from my interpretation of what a disguise is. A disguise is not something to completely shelter, change, or remove something, it is something that should leave enough of a thing to be able to deceive. The perceiver should be able to tell what it is, yet still be tricked into thinking that it's real.



## Michael Gallagher



*Unstable Condition - A Symptom of Life*  
Mixed Media, 11" x 14"  
Cold Spring Harbor Jr/Sr High School  
\$100

### **Artist Statement:**

I was inspired by Metallica album cover for "Kill 'em All." The pieces title comes from the lyrics of the song "Vital Signs" by Rush.





## Nicole Schrock



*Conjoined*  
Mixed Media, 9" x 12"  
Cold Spring Harbor Jr/Sr High School  
NFS

### **Artist Statement:**

The ducks in this piece were sewn together when they were first made, destining them to be together for the rest of their lives. This fate was not one that they wanted; they tried to rip themselves apart from each other, needing to be independent. However, they couldn't survive without their other half.



## Finn Monte



*Rule of Thirds*  
Digital, 16" x 20"  
Commack High School  
NFS

### **Artist Statement:**

"Rule of Thirds" is meant to represent how life and death can coexist, and how life and death both come in three stages. There's where your life starts and you're finding your way through the dark, the middle stage where you're changing and time is passing, and the last stage where you're free to go wherever you want, but you have heavy burdens and responsibilities weighing on you.



## Kelly Halversen



*Strings of the Plague*  
Crocheted Cotton Yarn, 17" x 17"  
Commack High School  
\$25

### **Artist Statement:**

I chose the medium of crocheting to make a unique piece to express this theme. The plague doctor is depicted in dark, dull colors to symbolize the dooming feeling of seeing a plague doctor in this time period. The use of black and gray in the plague doctor was to further express the doom and gloom of the plague doctor, illustrating him as death itself. I used white yarn for the eyes of the mask because it would stand out and show an eerie glow, as if the doctor was staring into your soul. I depicted the background in blood red as another way to mirror the theme of death.



## DJ Fusco



*The Smiley Fiend*

Digital

Half Hollow Hills High School East

\$200

### **Artist Statement:**

I made this on a small piece of paper in may and I didn't want this to be just some doodle I wanted it to be something scary and different than I what I would draw usually and I got inspiration from watching the conjuring franchise and insidious and made this abomination I also started to draw it digitally as that's how I work the best with technology I know this may not be many words but I don't always have the words to explain my art.



## Kerry Yeung



### *29 Teeth Left*

iPad; Apple Pencil, 16" x 14"

Half Hollow Hills High School East

\$50

### **Artist Statement:**

Falling teeth is one of my scary dreams, although I wasn't afraid when I had the dream. I used one point perspective in my artwork, so people's eyes can focus on the face when they first see this art, the girl and her facial expression tell how terrifying she was. In this artwork, the girl has three teeth falling out, according to a research, a person around the age of 12 will have 32 teeth, therefore the title of this artwork is 29 teeth left.



## Victoria Czoch



*Bleeding Gray*  
Photography, 39" x 45"  
Half Hollow Hills High School East  
NFS

### **Artist Statement:**

My art piece uses photography skills such as lighting and contrast to capture onions. This adds more depth to the picture and gives it an eerie feeling. I also added what looks like blood to one of the onions, in order to make it look like it's bleeding and meant for Halloween.



## Liza McPherson



*Inescapable Truth*  
Colored pencil, 13.5" x 16.5"  
Harborfields High School  
NFS

### **Artist Statement:**

This piece was initially inspired by my interest in exploring what lies beneath our surface as human beings. This prompt enabled me to interpret that concept in a more literal sense, which can be seen by the way the hands, skin still intact, explore an exposed skull. The hands in the drawing are the hands of an old woman, insinuating the innate human desire to understand what happens when you die, a desire I presume is heightened as you get older and draw nearer to the finish line.



## Sophia Dolinsky



### *Ghostface*

Transfer, Prismacolor, 12" x 14"

Harborfields High School

NFS

### **Artist Statement:**

My art piece is Ghostface, the killer from Scream. I have seen the movie several times whether it was by myself, or with friends and family. In my opinion, Ghostface is one of the more unique characters in horror. He has been put through several movies and games, yet still works as an effective scare. Horror is also special to me because I used it as a form of escapism during quarantine and other tough times in my life. As a result, I wanted to make a portrait of Ghostface. The piece itself is made of prismacolor pencils over a transferred image. This project was new to me as not only was I still learning how to effectively work with colored pencils, but it was my first time making transfer art as well. Some aspects of the drawing, such as actually transferring the image to the final paper, was difficult, but overall it was rewarding.





## Gianna Purpura



*The Hidden Place*  
Mixed Media, 10" x 9"  
Harborfields High School  
NFS

### **Artist Statement:**

Utilizing Micron pens and colored pencils, I illustrated the idea that anything is inclined to become hidden, disguising itself in plain sight no matter how spacious, yet to no avail, it still can sometimes be spotted. The dark scale of the abandoned house, contrasting with the colored pumpkins helps emphasize the desire of the pumpkins to stay hidden behind the tall grass, but still become noticeable due to their color. It is also worth noting that the house, too, desires to stay hidden from its surroundings, the main reason I chose the backdrop to be located in a desolate forest setting, but the tinted yellow windows also give their position away. Essentially, both the pumpkins and the house themselves try to become a stranger in their own environment but possesses qualities that get them sighted regardless.



## Alexa Shafy



*Deceitful Creature*  
Charcoal on Paper, 24" x 18"  
Hauppauge High School  
NFS

### **Artist Statement:**

The Plague Doctor's disguise can certainly instill fear at first sight and, as stated by one of the juror's, his face "was usually the last thing a person would see before meeting their death". Death is certainly, for most people, a dark topic, something they rather not to acknowledge or think about, except during Halloween time, when everyone displays scary figures like monsters, skeletons, witches and ghosts. Thinking about the real victims of the bubonic plague, I can't help to wonder if looking into the plague doctor's mask, the sick felt fear or relief to know the end was near. The feathers falling from the one raven in my drawing, symbolizes life slipping away.



## Sivan Pyle



*Melt*

Micron Pen, Watercolor, 9" x 12"

Hebrew Academy of Nassau County  
NFS

### **Artist Statement:**

In this piece, the main character is concealed from the waist up, the audience does not know what she looks like. She stands alone on a fractured piece of ice, slowly floating away from the main glacier, the cold temperature shivering her bare legs. That stark contrast between her concealed face and chest, yet clearly revealed knees and legs serve to highlight the purpose of this piece. This being an attempt to celebrate the darker, concealed aspects of a woman's body.

As a religious woman, an important idea is modesty, an example of this would be wearing clothing below my knees. But at times, I feel lonely in this custom and love to celebrate what may be seen as "dark" or "shameful". I emphasized this insecurity by highlighting the main character's knees through intricate hatch work and heavy lines, making a distinction between the stark white and darkened areas.



## Jazmin Corrujedo



### *Undesired Gaze*

Charcoal on Stretched Canvas, 42" x 32"

Hicksville High School

NFS

### **Artist Statement:**

The desire to not be seen is what piqued my interest. I wanted to replicate this desire through the usage of blurred lines and dark, dovid eyes. The material of charcoal facilitates this through the messy manner it interacts with the canvas. The soft vine charcoal blends softly producing the blurred vision, while the condensed charcoal's harsh marks illustrate the utter darkness in their eyes. The figure in my piece is attempting to conceal its face in repentance for excessively exposing itself in the past. The dim light in the figure's eyes represents the confidence they once had. Unable to face their past, the figure wants to be left undetected for the rest of their time.



## Natalie Parrott



### *Extraction*

Colored pencil and Gouache paint, 11" x 14"

Huntington High School

\$60

### **Artist Statement:**

In my artwork, I depict a plague doctor in mainly blues and greys, resembling the cold, lifeless ideas it represents: death and lack of identity. In the mask's goggles, you see a slight red reflection of the woman in the right. She represents life with her warm colors of red, brown, and beige. Her dress can be recognized as one which might be worn in a venetian carnival. She is wearing a mask to cover her identity, however the plague doctor is taking her identity, or her soul, from her.

This represents a few ideas: the first one being the fact that plague doctors would be the last thing which people saw before they passed away- making them a sign of death. Therefore this work can be interpreted as a depiction of how many men and woman died whilst under the care of plague doctors. The second idea would be that Plague doctor's masks are currently used as a symbol of concealing your identity. In this artwork, The plague doctor is removing the woman's identity to represent this fact.



## Jack Semelsberger



*Main St*  
Photography, 12" x 8"  
Huntington High School  
\$50 (Without Frame)

### **Artist Statement:**

The image presented in this show is a classic childhood "bedsheet ghost" on Main St, Huntington NY. I find the idea of a nightmare-ish creature like a ghost living a normal life very amusing and interesting to look at visually. Seeing a classic horror creation live an ordinary life, exploring Main Street in Huntington creates an interesting juxtaposition. The angle the photo was taken creates a feeling of "capturing" the ghost, as a classic ghost hunter would.



## Emma Gutierrez



*Face to Face*  
Acrylic Paint, 24" x 20"  
Mineola High School  
NFS

### **Artist Statement:**

My piece shows the skeletal and musculature parts of the human anatomy facing one another on a desolate street. If you could imagine their conversation they would be questioning the future of our planet and in turn the human race.



## Jasmine Sedra



### *Final Release*

Watercolor and Ink on Paper, 11" x 14"

North Babylon High School

\$50

### **Artist Statement:**

I attempted to communicate the idea of a dying patient finally being able to rest peacefully upon the arrival of the grim reaper after the death and abandonment of a patient in a surgical operating room. The eeriness of abandoned hospitals influenced the setting of the piece. What inspired me for the grim reaper was a mix of a typical look of a plague doctor and the features of a raven, a symbol of death. The figure sitting by the chair is meant to be the dead body's soul patiently waiting its time to rest and be taken away.





## Peyton Silvestri



*Life After Death*  
Acrylic, 14" x 11"  
North Babylon High School  
\$45

### **Artist Statement:**

This piece is inspired by the growth of a child to a teenager and how that affects the way we view our childhood things such as Halloween. This piece is also inspired by my mothers personal experience with a Ouija board from when she was a teenager.



## Colby Burns



*Plague of the Past*  
Photography, 13" x 19"  
Northport High School  
\$49.99

### **Artist Statement:**

In this piece I am trying to display how the horrors of the past and often forgotten and living in such times is very romanticized. In the digital render you can see a plague doctors mask on the floor of an old dungeon. This is meant to represent how while the horrors of the plague and other atrocities of the past have been for the most part forgotten, they still linger.



## Grace Schoonmaker



### *Infestation*

Gouache, Ink, and Colored Pencil, 12" x 9"

Northport High School

NFS

### **Artist Statement:**

In this piece I used ink to create different values over a wash of gouache paint. I also went back in with colored pencil to highlight certain features. This piece represents disguise as the hand in pulling down the eye to reveal something unexpected. The tiny spiders spilling out of the eye and crawling around the composition create an eerie effect.



## Zayed Sattaur



### *Death by Shredding*

Alcohol Markers and Colored Pencil, 11" x 14"

Plainview Old-Bethpage John F. Kennedy High School  
NFS

### **Artist Statement:**

This piece is of a Misfits, and hardcore punk fan, who died from playing guitar with the amp volume set too high, and died from the soundwaves blasting off his skin. Now he has returned from the dead as a zombie, with half his face missing.



## Madeline Dombrow



*Psycho*

Digital Photography, 966 px x 1080 px

Plainview Old-Bethpage John F. Kennedy High School

NFS

### **Artist Statement:**

Inspired by Alfred Hitchcock's "Psycho," the image is supposed to feel unsettling and haunting, like his films. "Psycho" revealed horror tropes that were never seen before, that are now represented in films quite often. Hitchcock changed horror.



## Sophia Lin



### *Lost Souls*

Charcoal Paper, 8" x 8"

Plainview Old-Bethpage John F. Kennedy High School

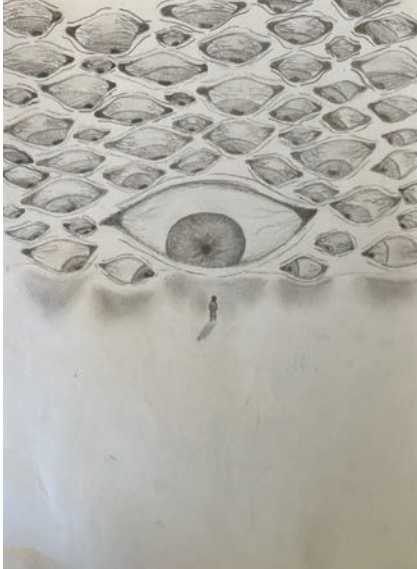
NFS

### **Artist Statement:**

"Lost Souls" is white charcoal on black paper. As I drew the white smoke overflowing out of the skull, I wanted to create a sense of eeriness and ambiguity in the piece. The shading is blended with the faces in the smoke, the lines and shapes are loosely implied with a blurred effect.



## Sally Feliciano



*Untitled 2*  
Pencil, 9" x 12"  
Ralph G. Reed Middle School  
NFS

### **Artist Statement:**

What also inspired me for my artwork on my first project is basically me thinking about art itself when I first pick up a paint brush that's when I know I can't give up on it no matter what, once I pick up my paint brush and look around the room I'm in gives me more inspiration for my art piece and looking at my mistakes I did. I do new things to make it even better and it turns out amazing.

I was very proud of my second piece because it was the work that I really wanted to do that represented how I feel in different ways. It was about how everyone looks right at you when you are presenting or talking about your own work, it can be stressful in a way seeing everyone looking straight at you expecting the best of your work.



## Molly Lebolt



*The Grave Is Your Future*  
Photoshop, Lightroom, 8" x 10"  
Syosset High School  
\$20

### **Artist Statement:**

The message, although simple, is meant to serve as a stark reminder of death, a memento mori, in the bustle of everyday life. Sometimes we fail to stop and think about our own mortality as we dart around obstacles and deadlines. A memento mori should be terrifying, it should prevent complacency, and that is the goal of these images. Various symbols are used throughout the pieces to portray this. I chose to use a plastic bag to represent panic, because it serves as a physical manifestation of the inability to breathe, as well as shows the models face underneath. The pearls act as a dual symbol which could either choke her (death) or make her rich (life and luxury). One of the images contains purposeful motion blur to show the lack of a solid line between life and death, and the constant presence of both in our lives.





## Maya Almaliah



*Unwelcome*  
Darkroom Photography, 10" x 8"  
Syosset High School  
NFS

### **Artist Statement:**

Piece 1: I wanted to highlight the subject of the photo by splashing the developer in a particular area of the photo. The drips of the developer is to add the extra effect of the ominous. It is supposed to represent the masking of certain parts of the picture, while the subject herself is masked. Piece 2: The idea behind the photo was a dark angel. The open hands represent the eligibility to accept all that is coming toward the subject. The pearls represent the grace and elegance of the justice that the subject represents. She is blind to all that is coming toward her, so she is ready to accept all. The heavy contrast in the darker part of the scale shows the ominous that is coming toward.



## Alexandra Hugel



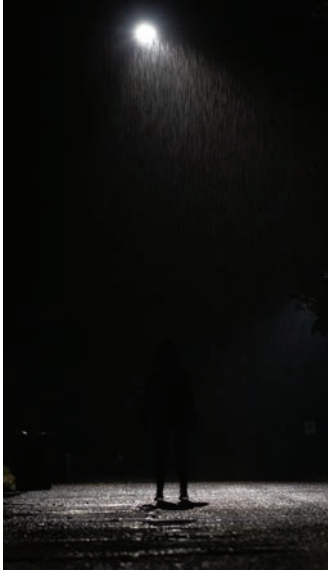
*The Wilting Flower*  
Digital Photography, 11" x 14"  
Syosset High School  
\$30

### **Artist Statement:**

For my first and last piece I was inspired by the afterlife. I inverted the image of the flower to portray a sense of death and made it look like the flower was starting to wilt. In the third image I was inspired by Midas' golden touch. Everyone that Midas touched would turn to gold, so in this image I wanted to create the illusion of the image turning to gold and the staircase leading to death. In the second image, I wanted to explore disease. The sparks of fire in the image is there to represent a virus invading our society.



## Scout Chen



### *Under the Light*

Digital Photo/Photoshop, 11" x 20"

Syosset High School

\$30

### **Artist Statement:**

Because it was dark and raining while I took these photos, I used the weather to my advantage. For my first image, I used the reflection of a streetlight on the falling raindrops and the road to highlight my subject. This piece communicates how one can stand out even if they feel like they are surrounded by darkness. My second image was taken while the subject was jumping to create a levitating effect, which shows one's detachment from the world. The last image was taken to purposefully conceal the subject's face to give a sense of mystery and create an eerie atmosphere.



## Samantha Medley



*DANGER*

Mixed Media, 9" x 11"  
Uniondale High School  
\$20

### **Artist Statement:**

My mother is very religious and always told me Halloween was about worshiping the devil. As a kid I never listened to my mother and tried to celebrate in any way I could. This piece is supposed to show how children don't see danger in things. I used charcoal, ball point pens, markers and colored pencils.



## Juliana Silva



*Skull Vamp*  
Black Pen, 15" x 10"  
Valley Stream North High School  
NFS

### **Artist Statement:**

What inspired me for my work is the word Halloween. What I did is to show what I see the most on the day of Halloween. Many people put up a lot of fake spiders and skeletons as their house decorations. Many people dress up themselves as skeletons too. People also draw webs on their faces with face paint to represent spiders. It is common to see a few people walking around in a vampire costume. On my drawing I created a couple spiders along with a vampire skull. I gave the skull fangs to represent it as a vampire.



## Isabella Mascetti



*Look at the Women*  
Ink with Black Acrylic, 20" x 15"  
Valley Stream North High School  
NFS

### **Artist Statement:**

My inspiration was the sexualization and brutalization of women in horror media. The virgin protagonist's best friend who usually has a boyfriend and a sex life is often killed while performing such action with her partner. Women who have sex in horror films are killed as their virgin counterparts are not killed. This is present in the media we all consume, Popular horror media brutalizes women who are not virgins or clean like their protagonists are. The women who choose to be shy virgins are allowed to live, escaping the brutalization and sexualization of other women. We are all guilty of consuming and promoting this trope. Who hasn't seen *Nightmare on Elm Street*, *Friday the 13th*, and *Halloween*? Thus, my art is to make people think about the media they are consuming and evaluate how that makes them feel.



## Elaine Ching



*Interior Beauty, Death, and New Meanings*  
Mixed Media, 16" x 20"  
Valley Stream North High School  
NFS

### **Artist Statement:**

I wanted to incorporate the brightness and beauty of Halloween through the floral border to contrast that with the darkness and death also associated with the Bubonic Plague, the black pit. Jumping from that black pit is the new meaning of the Bubonic Plague doctor, a costume and Halloween concept. From representing the guilt of failed doctors to a one night costume, it's an ever evolving concept that stems from a history of pain and death to a costume that can help one fit in and even celebrate in.



## Gilana Etame



*Hang Mioku*  
Digital Art, 18" x 24"  
Valley Stream North High School  
NFS

### **Artist Statement:**

My piece is inspired by a woman named Hang Mioku, who was so obsessed with cosmetic procedures that she ultimately did irreparable damage to her face. Mioku was originally a very beautiful singer, though on a quest to maximize her beauty, saw many doctors until she was eventually turned away. Dissatisfied with her face at the time, she turned to doing home procedures and injected cooking oil into her face. Mioku destroyed her face, as it blew up like a balloon and she became unrecognizable. After living with her appearance for several years, she began having procedures done to reverse it, however she would never look how she did before her obsession. Mioku now lives her life with a permanent reminder of her mistakes. I was inspired by her story because it expresses the irony in pushing boundaries too far until it is too late to go back.





## Lilah Black



*Pestis Venit*  
Digital Art, 10" x 8"  
Walt Whitman High School  
NFS

### **Artist Statement:**

What this work is intended to communicate is the despair and darkness of the time period, as well as the morbid beauty of the beaked doctors. While doctors are meant to be images of good health, the world of medicine during such an early time made the ideal exceedingly difficult. Plague doctors, with their limited resources, could only do so much. Their image became heavily associated with the idea of death, on par with even the grim reaper himself. I attempted to communicate that the doctors only meant to help the people affected by the illness, thus the depicted serenity of the doctor smelling a flower. The inspiration for it comes partially from tarot cards and zodiac. Additionally, the depictions of flowers are also meant to connect to the flowers and herbs used to fill the masks.



## Joseline Canales-Lazo



*Where the Kittens Come to Play~*  
Ink, 11" x 9"  
Walt Whitman High School  
NFS

### **Artist Statement:**

As a growing artist I've always loved the fantasy world and how unlimited of ideas you can come up with when you make something that comes from your imagination. I've used my imagination to create something that is scary and cute but also has a deep meaning.



HUNTINGTON ARTS COUNCIL

***Nightmare on Main Street  
Additional Artists' Submissions***



**Artist Biographies and Statements**



## Sofia Mazza



*The Witch is on Trial*  
Pencil on Paper, 13" x 9"  
Bay Shore High School

### **Artist Statement:**

I enjoy drawing portraits, because I am interested in facial expressions. The message that I like to communicate with my artwork is the feeling and mood in a drawing, which inspired me to make this piece, because it conveys a feeling of being evil and or psychotic. In the rest of my artwork expression is important and something I like to practice and create, because it is important to the piece for there to be a certain feeling around it.



## Vita Mazza



*Grey Matter*  
Acrylic Paint on Canvas, 16" x 20"  
Bay Shore High School

### **Artist Statement:**

I aim to create art that provokes deeper thought. I like to combine dark and dream-like imagery with realistic human anatomy, to create a strong contrast. I'm inspired by artists such as Tim Burton and Alex Grey for reference. I enjoy using most medias to create this aesthetic such as clay, acrylic, and pencil.



## Carolyn Musselwhite



*Vines, Bathtub, and a Boy*  
Photography, 11" x 14"  
Cold Spring Harbor High School

### **Artist Statement:**

This piece exemplifies a boy who has drowned in a water-filled tub surrounded by dirt and vines. I was inspired by our modern day world, and the pollution that we are constantly contributing to our environment. I wanted to create an artwork that could show the earth getting back at the people, and overall showing us the possible detrimental effects of our ways.



## Simone Gulotta



*Watcher*  
Alcohol Marker, Acrylic Paint, 14" x 11"  
Cold Spring Harbor High School

### **Artist Statement:**

This piece was inspired by a dream I had. In this dream, I was under the impression that I was being watched. This unconventional portrait of a woman with eyes all over her face and body serves as the personification of the feeling I had while asleep.



## Maya Soskin



*Stuck Behind An Appearance*  
Oil pastels, Paint, Pencil, 11" x 14"  
Cold Spring Harbor High School

### **Artist Statement:**

I created this piece with a combination of what we as people believe is scary, but also something that my imagination finds intriguing. I'm interested in things beyond what we are told is "normal" and decided to make this piece somewhat scary, but also detailed and disturbing. It allowed me to follow my imagination but also leave it open for others' interpretations. This piece may look scary, but we don't really know what's behind the mind of this creature.





## Mia O'Hara



*Peel-Off Face Mask*  
Oil Pastels, Colored Pencils, 11" x 14"  
Cold Spring Harbor High School

### **Artist Statement:**

My art is a fantasy piece, but suggests very real life situations. The picture is of a very tired looking girl's "face" un-purposely peeling to show her unearthly under layers, or "real face". In real life, whether we like it or not, or plan to or not, we put on a mask to cater to who we are speaking to. But our mask comes off eventually, and it is not easy to hide our true selves. This piece questions whether we should hide our self expression or be true to ourselves and others.



## Sunny Brizuela



*The Angel of Death*  
Watercolor, Colored Pencils, Sharpie, 11" x 14"  
Cold Spring Harbor High School

### **Artist Statement:**

I normally like drawing in pencil, but I had always been intrigued by the layering techniques of watercolor and wanted to experiment. I also enjoy drawing feathered wings, so this piece was a treat to work on. I wanted to expand upon fear of the unknown and decided to make the angel in the center of the piece more cryptid-like than heavenly.



## Phoebe Stern



*The Annual Dilemma*  
Digital, 12" x 18"  
Cold Spring Harbor High School

### **Artist Statement:**

For this piece, I based it off a girl much like myself. I had to make a decision on how to interpret disguise, and I decided to take a more relatable, fun route. In return, I wanted to make the piece very visually appealing.

Between the girl and her different poses, I wanted to make sure they complimented each other in a tiered way. Since the girl is switching between different outfits, I wanted to retain her identity and still make it very clear that it was shining through. I wanted to make the girl the focus of the drawing, and to make her very distinguishable. I gave her very long, colorful hair to make her stand out between costumes. I used fun posing, posture, expressions and coloring really brought the feeling I was hoping to convey.



## Charlotte Wells



*The Clown With the Pointed Teeth*  
Pencil and Ink, 8" x 10"  
Cold Spring Harbor High School

### **Artist Statement:**

I loved drawing this piece and had a great time going over it with ink and incorporating shadows. For this piece I thought of one of the most common fears out there, clowns. Clowns are an interesting and scary thing to draw which opens the door for all kinds of creativity.



## Isabella Guido



*Two Plagues Meet*  
Mixed Media on Wood, 12" x 24"  
Commack High School

### **Artist Statement:**

The concept behind my piece is comparing modern and old age plague doctors. Although presenting differently in the way that they protect themselves, both are equally disturbed and exhausted by the death that consumes them. Wearing masks may protect their physical well being, but their inner turmoil remains the same. The images of agony are forever burned into their minds.



## Hannah Steinberg



*Too Late*  
Colored Pencil, 16" x 20"  
Commack High School

### **Artist Statement:**

My Nightmare on Main street piece is a display of the death that occurred during the bubonic plague. Plague doctors would try their hardest to save those infected, but most of the time patients would succumb to the horrible disease. When looking at my drawing, you are looking from the patients perspective right before they pass. The plague doctor has a hand reaching out to try and save the viewer. Behind the doctor, we can see fire and skulls which represent death. Only the viewer can see this. The doctor cannot because the patient is the only one who can feel the reality of what is about to happen.



## Charlotte Oser



*The Life Within Death*  
Colored Pencil, 16" x 20"  
Commack High School

### **Artist Statement:**

My artwork conveys the life found within death, I wanted to not only show varying contrast within the color used in my piece but also within the subject of the bubonic plague. The more grim part of my artwork can be found within the hourglass full of blood, floating eyeballs, plague mask, and scythe. However, to juxtapose such a theme I added bright flowers, clouds, grass and a masquerade mask to show a time where things were more joyful in life. These elements connect but also stand apart so vividly because when one life is lost, something is gained, as well as how many people believe in reincarnation. Death is not only grim but something that is part of nature.



## Rylie Curran



*Plague Doctor*  
Mixed Media, 16" x 20"  
Commack High School

### **Artist Statement:**

This piece was done in a medium of water color and colored pencil. Pictured in my creation is the "Plague Doctor" carrying an unknown dead body with piles of dead bodies behind him as he emerges from a dark, mysterious sky. I wanted the contrast between the doctor with the bodies and the sky to be pretty drastic because the death caused by the Bubonic Plague was so significant. I also wanted to make sure to keep the dead bodies very vague and to not give them faces because the real prospect of this piece should be the plague doctor. I didn't want the victims to take away from his presence because although you can't see his face, he was a victim just as much as the person he is carrying. The doctor trudging through all of the bodies and emerging with one, hanging lifeless in his arms, send the message that he is a human under that mask and this plague effected him just as much as it did everyone else.





## Samantha Borre



*Memento Mori*  
Colored Pencil, 16" x 20"  
Commack High School

### **Artist Statement:**

After reading the statement given, I chose to focus on the theme of "Momento Mori" or the symbols of one's "last earthly moments". Pictured in my drawing, is the arm of a skeleton, with a raven, a bird often associated with death, perched on its arm. It's holding a pocket watch to show one's time running out. All of these things are representative of the end of a life.



## Katherine Ben-Ezra



*Deaths Wings*  
Oil, 8" x 10"  
Commack High School

### **Artist Statement:**

I was heavily inspired by the idea of masquerade masks, their use to conceal identity, and the staff plague doctors used to probe patients. I wanted to create a piece of work to demonstrate death's, often hidden, presence. To accomplish this, I chose to incorporate the hourglass between wings, which is historically placed at the end of the sticks used by plague doctors during the Black Death. This aspect of the composition serves as a masquerade mask, concealing the identity of death.



## Madeline Tomei



*A Deal with Death*  
Acrylic, 16" x 20"  
Commack High School

### **Artist Statement:**

My piece, "A Deal with Death" was inspired by Cassius Marcellus Coolidge's painting series "dogs playing poker". This acrylic on canvas features the Grim Reaper, the Devil and a Plague Doctor, all of which were my interpretations of Memento Mories.

The painting is from the perspective of the player, who is holding a winning hand of cards. The card holder's hand is representative of his or her fate. The royal flush ensures that the player will escape death one more day. The cards represent love, through the suit of hearts. Tragedy and comedy as a part of life are represented on the "10". Faith in the image of the biblically accurate angel or "Seraphim" is depicted on the ace of hearts.



## Ashley Leach



*The Red Haze*  
Camera and Photoshop, 8" x 10"  
Half Hollow Hills High School East

### **Artist Statement:**

I want this piece to create a sense of mystery and curiosity for the viewer based on the lighting and shadows in the piece.



## Saharrah Dukes



*Me, Unzipped*

Digital Art, 2360 px x 1640 px

Half Hollow Hills High School East

### **Artist Statement:**

The disguising element of Halloween is something I resonate with, as I often find myself wearing a mask around my peers. The way I present myself changes frequently, like how one would choose a new outfit for the day. But once you unzip the layers I hide within, there is a whole different side I've yet to show. Underneath the vibrant colors I illustrate, there are new colors waiting to pour out.



## Maggie Deegan



*Venetian Legacy*

IPad Pro and Procreate, 2048 px x 2048 px  
Harbofields High School

### **Artist Statement:**

My piece is inclined to show beauty of the Plague Doctor through both the past and the present, and how they compare to one another. One side shows the traditional Bubonic Plague Doctor, in a grayscale color yet still reflecting the beauty of the symbol through silver foil throughout. The other side shows a modern Venetian Plague Doctor, in a color and with gold foil throughout. The entire piece is to compare the two in a ying and yang concept, showing how the new and the old are interconnected and are still bewitching to this day.



## Nora Sweeney-Gladen



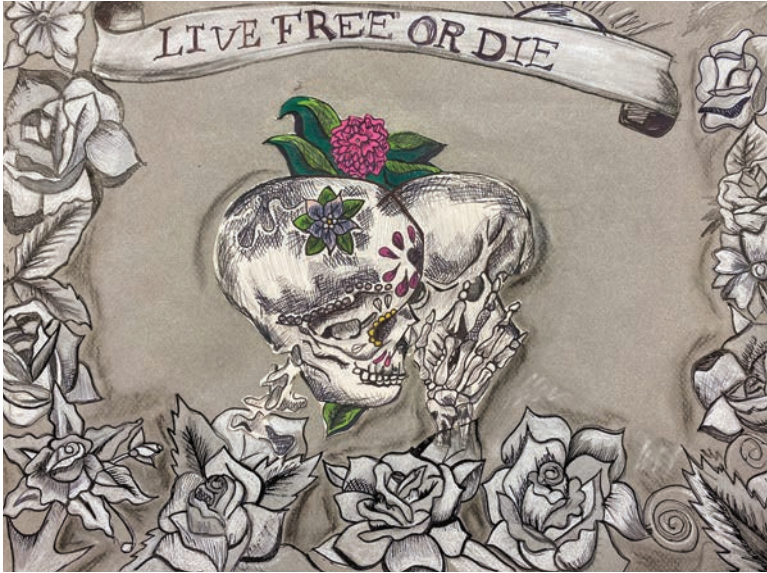
*Vulnerable Harbinger*  
Pen and Colored Pencil on Paper, 12" x 12.5"  
Harbofields High School

### **Artist Statement:**

For this piece, I was heavily inspired by the theme of death during the middle ages. The woman in my piece is not a plague doctor, yet wears a mask of a skull, similarly. She is presented as a representation of death, along with the crows on her shoulder and in the background. Her pose is reserved, with a pitiful look in her eyes. This is meant to show the loss experienced through death.



## Sarah Ahlsen



*Love and Lust*  
Charcoal and Pen, 12" x 16"  
Harbofields High School

### **Artist Statement:**

This is my tattoo inspired piece that focuses on love and lust.





## Leah Dascoli



*Melion, Knight of Arthur*  
Acrylic, Illustration Board, 24" x 13"  
Harbofields High School

### **Artist Statement:**

The inspiration for this piece was an anonymous breton piece of literature focused on Melion, a knight of King Arthur. In the story, Melion is turned into a wolf so that he could hunt a stag for his wife, the princess of Ireland. She left him to go back to Ireland with his squire and he followed only to be hunted by the nobles. King Arthur visits years later and helps with transforming Melion back. This poem was apart of a study of folklore I was doing and the visual of this knight stayed with me - inspiring me to create a piece based on his outside appearance as well as his "true" appearance.



## Teddy Steinhaus



*The Creature Within*  
Sketch Book, 9" x 12"  
Harbofields High School

### **Artist Statement:**

The inspiration of my piece is what was under the mask can also be the opposite of what is going on inside. The monster within can come out and show the real ugly. the black crow represents the littlest thing and the darkest thing that can happen. the hand represents a trial of escape. the other mask shows what the skin on the outside can look like.



## Camille Lach



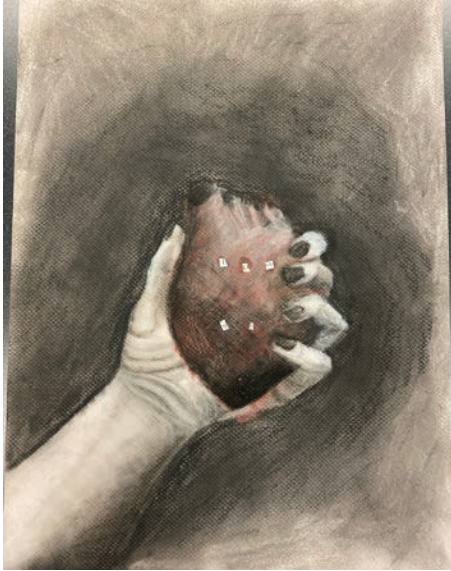
*Halloween Night*  
Digital Art, 13" x 12"  
Harbofields High School

### **Artist Statement:**

I enjoy creating characters that are fun or bubbly and colorful. So this piece isn't particularly dark or scary, it's meant to show a more fun side to Halloween and dressing up. Witches have always been my favorite thing from around Halloween so I knew I'd do something with that. I hope my piece makes people feel happy and remember the spirit of Halloween from childhood.



## Ella Short-Eigenbrod



*Please be Gentle*  
Mixed Media, 16" x 12"  
Harbofields High School

### **Artist Statement:**

This piece is a statement on the vulnerability of love and how someone literally holds your heart in their hands. It portrays the bravery and trust since the person holding your heart could decide to crush it in their hands.



## Angelina Dolinsky



*Girl with the Pumpkin Head*  
Gouache, 8.5" x 5.5"  
Harbofields High School

### **Artist Statement:**

The two things that inspired this piece were *The Shining* and *Over the Garden Wall*. When I think of Halloween I think of the pumpkin people from *Over the Garden Wall*. The twins from *The Shining* are the first thing I think of when I think of horror.



## Dillon Al-Sullami



*The King of The Dead*  
Pencil and Pen, 9" x 12"  
Harbofields High School

### **Artist Statement:**

I like the concept of horror drawings and how free and creative you can be. skeletons are easy for me as ive had a lot of experiance drawing them.



## Jack Grauer



*Your Best Friend, The Smiler*  
Pencil on Paper, 9" x 12"  
Half Hollow Hills High School East

### **Artist Statement:**

Halloween is usually regarded as a night where anyone can be anything, with the help of a mask and costume of course. But for me, I see it as a night where we all take off the mask that shields the world from who we truly are. The night we unveil the demons hiding within us all, without the worry of being seen differently afterwards. Figuratively, this poor soul is someone too afraid to take off the mask, too afraid of the thoughts and opinions held by those in the shadows behind them. But at the same time, they are so desperate to free the beasts hidden underneath, to be showcase them under the spotlight. Hence, leaving this person trapped in agonizing irresolution. In a literal sense, this trapped feeling also applies to our main character. Of course, there is much more to this story that I have yet to say, such as the letters, both falling from above and being walked on below. But in time, maybe more will be revealed about Your Best Friend, The Smiler.



## Holly Eude



*Sirens Serotonin*

Digital, 1920 px x 1371 px

Half Hollow Hills High School East

### **Artist Statement:**

This piece of art is a bit of surrealism and a eerie beauty with the siren. The dark subway underwater theme and dark color palette was a perfect idea. I wanted a not so basic piece of art. She hopes to find happiness in such a empty and cold deserted place. I hope you like it.





## Charles Schlaimanta



*She's Not Ok*  
Mixed Media, 16" x 20"  
Half Hollow Hills High School East

### **Artist Statement:**

Originally i did this artwork for another project for school but then my teacher told me about this nightmare application and i though the artwork relate a lot to this and so her we are . It's about a black girl who is beautiful and might look happy and fine because everything around her looks pretty normal but right now she feel like her life is falling apart and under those normal T-shirt she does self harm, she feel depressed and don't want to be in this world anymore, because she feels like her "nightmare" are coming true, but she keep on going because she don't want to give up on herself yet and her family.



## Juliet Ganz



*Plague Doctor Cowboy and his Trusty Steed*  
Digital, Procreate App, 18" x 12"  
Half Hollow Hills High School East

### **Artist Statement:**

A plague doctor, tired of his thankless job, leaves his old life for a new one out on the range. By putting on a costume he is able to transform into his dream self and live out his fantasy. With his trusty steed by his side.



## Emma Bezack



*From the Inside Out*  
Photography, 11" x 8"  
Half Hollow Hills High School East

### **Artist Statement:**

These pieces are meant to invoke feelings of mystery to address the theme of this nightmare on main street competition.



## Jaelyn Cruz



### *The Twins*

Oil Pastels on Illustration Board, 15" x 20"  
Half Hollow Hills High School East

### **Artist Statement:**

I was basing the appearance of the drawing on a character in the game Fran Bow known as The Twins. I changed the fact that "The Twins" shared one singular body and I also added that one twin is demonic. I used oil pastels to show the dimension and detail of how one face melted and shifted into another.



## Carlee Dickson



### *Unlucky Draw*

Procreate, 1800 px x 1200 px  
Half Hollow Hills High School East

### **Artist Statement:**

I decided to draw a plague doctor joker playing card with some extra paranormal features to it. I imagine the card to be part of a haunted deck, potentially by those the doctors have wronged. These features include a strange glowing Red Cross necklace that connects each inverted doctor, an "aura" surrounding them and matching glowing red eyes. The scythes are textured with procreate brushes to keep them separated from the masks, and the doctors themselves are covered with different belts, bottles and other remedies to assist with their work. They also have a book filled with things they may need to know attached to their sides. They are exact copies, like a normal playing card would be, just inverted so either way you turn it, it will be the same. I'm proud of the card idea, along with the small corner borders I free handed. I was also happy with the clothes I drew and how I shaded them, but because of the neutral nature of plague doctors attire it was difficult for everything not to just blend in together. I wish I was able to create more contrast, but think I improvised well with the dark background and red light streaks to help add a pop of color. I enjoyed working on this project as I love creepy things, and really like the concept I came up with and executed.



## Ava Kaplan



*The Drip Never Stops*  
Gouache on Paper, 16" x 29"  
Half Hollow Hills High School East

### **Artist Statement:**

My piece entitled "The Drip Never Stops," was created using gouache during a figure drawing session. The way that the light transformed the face of the model appeared ominous as his face was encased in shadow. His expression took shape in a sinister manner, leading me to select dark colors to convey the emotion. Through the use of watered down gouache, I created drips to appear as blood, emphasizing the haunted story of my piece.



## Jordan Ross



*Tick, Tock!*  
Colored Pencil, 11" x 14"  
Huntington High School

### **Artist Statement:**

In summary, the story in my artwork is time. I decided to take on the piece of Lauren la Labelle's description about the origins of the infamous plague doctors. In Labelle's description, she explains the appearance of a plague doctor. For my plague doctors appearances, they are wearing long-beaked masks, hats, and waxy coats. One thing in particular I took from her piece is the stick, she mentions how the plague doctors would use sticks when around their patients. In my piece, I have the doctor's sticks facing the patient. My patient is laying on a clock, their time is almost up. Lauren mentions how the plague doctors were the last moments a person would see before passing, and I wanted to represent that through my artwork.



## Keith Fives



*Memento Mori*  
Gouache and Pen, 9" x 12"  
Huntington High School

### **Artist Statement:**

Memento mori, "remember you will die." The plague of life soon takes over our bodies along with our memories, thoughts, and touch of reality. Once this plague spreads throughout the body there is no turning back, no undo second chances. Death is everlasting with no backspace bar. Remember you will die, "memento mori."





## Lilebeth Banegas



*You're Next*  
Marker and Water Color, 7.5" x 5.5"  
Huntington High School

### **Artist Statement:**

A monster roaming around the hallways, looking for its next victim.



## Talia Koas



*Eerie Hallways*  
Photography, 16" x 20"  
Huntington High School

### **Artist Statement:**

I took this picture to capture what it feels like to explore spaces which once were used but are now forgotten. These places are now eerie and wild, overtaken by nature and time. Even though they may be seen as creepy, these places hold beauty and loss that must be shown.



## Aisy Franciscovich



*Trick or Treat on Main Street*  
Block Print, 11.75" x 17.5"  
Huntington High School

### **Artist Statement:**

Halloween is a celebration of life. It allows us to cherish the memories of those who have passed while celebrating the new memories we are creating. Anonymity is the main reason for my use of ghosts, they have such a simple shape that each one is the same. One of the most amazing parts of this day is the fact that anyone can be anything.



## Jillian Pascucci



*The Werewolf and Thorns*  
Acrylic on Canvas, 14" x 11"  
Huntington High School

### **Artist Statement:**

Keith Haring, drama, and horror movies inspired me to make this piece, *The Werewolf and Thorns*, (That I've named) the piece radiates the drama of death and how the villain is being killed. But how do you know the wolf is evil? That brings in the drama mask to represent the complicated emotions of the death of the wolf. Though we don't know the wolf is bad or not, not even myself knows. I let society decide what this painting means to you. Don't judge the wolf because he's scary, judge him by what he gives to you.



## Sebastien Simon



*The March of the Libra the God That Craves Judgment and Order*  
Pen and Color Pencil, 9" x 12"  
Huntington High School

### **Artist Statement:**

My name is Sebastien Simon and last October I made an Art piece for the contest Nightmare on main street called The Sea Of Demons. This year I wanted to do something that was based on something about me or a part of me. March of the Libra : The God that craves Judgment and order is based on my zodiac, the constellation Libra. Imagine a world where there were wacky trees you would most likely see in a Doctor Seuss book and Monsters you probably have as a paralysis Demon. Now out of this whole Drawing, the first thing you would notice most would definitely be the feathered ,black stringed, multi masked primordial God. It's name is The One That Wanders. It is called that because it wanders aimlessly looking for whatever can fit on its scales. The little people that are all piled on each other are the residents of this Hell they call home. Each year more than 1,000 or 10,000 residents are picked from the ground or their own houses knowing that they will never see their homes ever again, which brings me to the Monsters on the Ground. Notice how the monsters have the same pale face, the same black substance coming from their eyes and mouth, only difference being...well they look like monsters. That's right any resident that has already been placed in The One that Wanders scales and escapes will automatically become a new horror in this messed up world that these Monsters live in. The only thing they have in common with a lot of other planets is that they at least have one holiday, which so happens to be my birthday, October 13th. Every year on that specific day all the Monsters and God, including their own moon, moves to the middle of the planet to attend a great ceremony held by A Fathers Of The Stars-(Not the official name) along with The Holy pig chosen by God-(again name not official) also moving to the the middle. The only Good thing that could bring some feeling but then sadness to the world is the sky as its colors bring beauty to this world,But as I said the sad part is the Stars symbolizes the beauty and wonder they could never dream or grasp of having one day. Out of all the things I've drawn here, my favorite drawing is the Moon. In the end I'm glad that I decided to once again take place in Nightmare on main street.



## Victoria Befumo



*Thirteenth*  
Photography, 16" x 20"  
Huntington High School

### **Artist Statement:**

This piece was inspired by the superstition of Friday the 13th. This day has a haunted connotation attached to it and therefore I wanted to represent this within my photograph. The ripped shirt and dark basement represent being trapped in the fear of everything around you. Through Halloween we can be who and what we want to be, with the use of costume and makeup. I was able to turn my model into a character from my nightmares, that has been disheveled and bedraggled.



## Sarah Corwin



*Sir Pumpkin Head*  
Photography, 11" x 14"  
Huntington High School

### **Artist Statement:**

The image seen here is called Sir Pumpkin Head. He represents the fun and playful yet sinister side of Halloween. With masks and unknown faces, we never really know who or what is behind them. What may seem innocent and playful could be just the opposite. The sinister can hide among us on Halloween sparking unrest. I am hoping that my image at first creates a jovial feeling that then turns uncertain as the viewer engages.



## Gabby Miller



### *Illusions*

Photography, 16" x 20"  
Huntington High School

### **Artist Statement:**

The image presented in this show is a surrealistic piece created at Caumsett Park in Lloyd Harbor. The piece has a unique point of view as it showcases a dreamlike yet frightening scene. I incorporated multiple pictures and layered them together to create a surreal image. I am hoping that the final piece provokes a sense of wonder and curiosity for my viewers.





## Emma Davidson



*Veil*  
Photography, 20" x 13"  
John F Kennedy High School

### **Artist Statement:**

I am inspired by both darkness and minimalism. I like the idea of making the veil pop out of the darkness by using different lighting in photoshop. The phrase "showing the light in the darkness" was an inspiration for this photograph.



## Lindsay Slabowski



*Take It To The Grave*  
Photography, 12" x 8"  
John F Kennedy High School

### **Artist Statement:**

I was inspired by the tv show *Pretty Little Liars* and more specifically the intro to the show. At the end of the intro, one character shushes the audience and I was inspired to create a creepy picture that reminded me of that intro. I chose to add blood to the photograph to create an eerie type of feeling when you look at it. My thought process was creating a picture that made whoever was looking at the photo feel like they themselves, are being sworn to never tell this secret.



## Erin Donovan



*Day of the Dead*  
Digital Media, 8.5" x 11"  
John F Kennedy High School

### **Artist Statement:**

My day of the dead piece is used to show the traditions seen during November first, including the spreading of marigolds to help the create a path on the living world to the dead, and the faceprint commonly worn during the celebratory day. I wanted to express how day of the dead is a happy holiday, when many consider November first as a scary or solemn holiday.



## Daniela Ortez



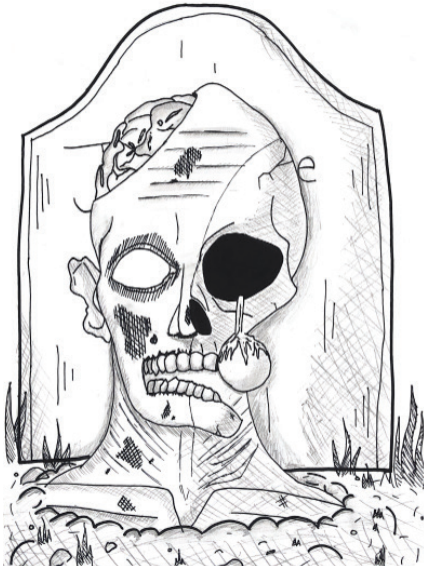
*Despair at Sea*  
Color Pencil, 10" x 10"  
Mineola High School

### **Artist Statement:**

Sometimes the ocean can be calm and tranquil, watching it can put you at ease. **SOMETIMES**, it can be a dangerous, life-threatening force that can not be tamed. Like life some days are peaceful others can be riddled with unrest, horror and just rip an individual to pieces, literally.



**Alyana Abreu**



*Untitled*

Ink and Graphite on Paper, 12" x 9"  
North Babylon High School



## Emily Miccio



*Love Taken By Darkness*  
Charcoal, 9" x 12"  
North Babylon High School

### **Artist Statement:**

This piece I've created represents a skeleton-like grim reaper holding a heart with his scythe in the deep, dark night. Looking happily to be stealing this unknown heart. The question is, whose heart does this belong to? Who was this skeleton before he became deceased? The Grim Reaper represents death, and one who takes souls and the lives of other people when they pass away. This here reaper expresses how he feels with the idea of taking souls and the hearts of others.



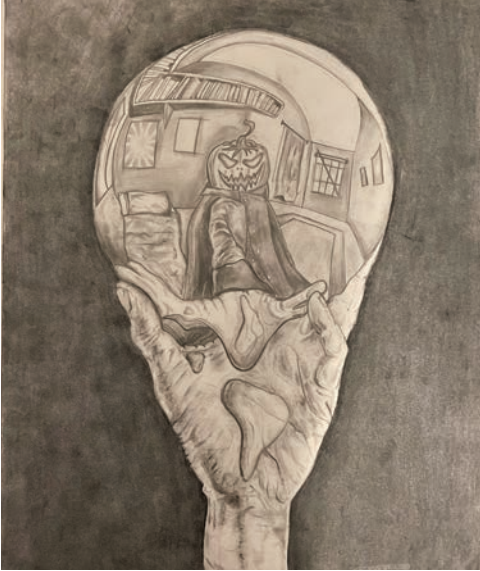
## Matthew Holcombe



*Untitled*  
Watercolor and Ink on Paper, 11" x 14"  
North Babylon High School



## Isabella Coppola



### *Evil Truth*

Graphite on Paper, 14" x 11"  
North Babylon High School

### **Artist Statement:**

The inspiration for my piece was the idea of having an altered reality or having different perspectives through disguises. The pumpkin is seen through the globe as its own reality while the other side is the real world. My artwork is a twist on M.C. Escher's drawing that adds elements of Halloween spirit to it by incorporating the jack-o-lantern on to the body of the headless horseman.





## Kiara Maharaj



*Blindness To The Truth*  
Charcoal and Pastel on Paper, 11" x 14"  
North Babylon High School

### **Artist Statement:**

My art is mostly about expressing the truth behind people. With every artwork I make, I make sure they have a very deep meaning behind it and in this art is all about facing the truth.



## Hannah Candia



*Battle of the Different*  
Oil and Soft Pastels on Paper, 11" x 14"  
North Babylon High School

### **Artist Statement:**

My piece was a spur of the moment idea that came out of the blue, yet I decided to choose two different mediums to make my piece interesting. I chose a rat and a bat to resemble the two different mediums I used and how things are different in life because of their different aspects.



## Roxana Castellon



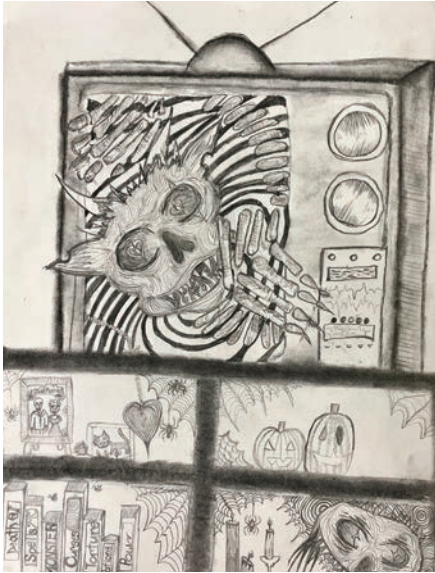
*Salem Fallen*  
Mixed Media, 36" x 14"  
North Babylon High School

### **Artist Statement:**

This piece goes back into the Salem witch trials. The dark brown canvass represents the interior of what a 1600s wall would look like. On this wall the artwork is hung behind paper artifacts taken from the bible. It represents the religious persecution it had on people during this time and what they did due to their beliefs.



## Caitlin Grant



### *Creepy Thing*

Charcoal, Pencil on Paper, 14" x 11"

North Babylon High School

### **Artist Statement:**

In this piece, I wanted to create a scary creature crawling out of something that everyone uses to this day -- aka a TV. I included pencil, charcoal, and time!



## Angela Shi



*Woman in the Woods*  
Gouache on Paper, 11" x 14"  
North Babylon High School

### **Artist Statement:**

I was inspired by Japanese folklore. I think it's interesting and each of the creatures are unique. I went through several sketches and projects because I thought all of them were interesting. I chose to draw the kitsune in a forest because I wanted to create layers in the art with trees.



## James Russo



*The One Who Lurks the Streets*  
Blender, 3D modeling, 19" x 13"  
Northport High School

### **Artist Statement:**

For this piece I used Blender and 3D modeling which is a new skill of mine I've only recently started learning almost a year ago. I decided to stray away from a traditional plague doctor mask and instead go for a more bird skull to represent death and the plague that was devastating early 17th century England. Due to how prevalent death was at the time, I felt him just walking not doing anything crazy in particular was enough to represent the death that was ongoing and just how prevalent it was, walking around was enough to stumble upon bodies ravaged by the plague.



## Lindsay Connolly



*In The Darkness...Horror Awaits*  
Charcoal and Pen, 18" x 22"  
Northport High School

### **Artist Statement:**

For this piece I used charcoal and Microns to keep the piece dark and spooky. I made the doorway the darkest so that the eye really focuses on it. I also added things in the windows so that there is always something to be curious about no matter where you look. I included many elements to add to the spookiness such as the eyes in the dark doorway, the faces in the upstairs windows, and no hands on the clock.



## Maureen Culhane



*Strings of Fate*  
Graphite and Ink, 11" x 14"  
Northport High School

### **Artist Statement:**

The piece was inspired by other's interpretation of death. People express death in a multitude of ways ranging from peaceful to horrifying. My own piece is a deceiving death. What seems lovely turns out to be disturbing. Similarly to the line between sleep and eternal rest.





## Sundri Kaur



*Howling at the Moon*  
Digital Photography, 10" x 14"  
Plainview Old-Bethpage JFK High School

### **Artist Statement:**

This photo is of the moon during a summer night. The different lighting allows different emotions to be seen and felt. It can allow for different interpretations, some being as creepy, sadness, or anything really. This idea is what gave me inspiration for my photo.



## Isabella Bonaguro



*The White Mask*  
Photography, 8.5" x 11"  
Plainview Old-Bethpage JFK High School

### **Artist Statement:**

This photo is called "The White Mask." This project took me out of my comfort zone, I am used to doing landscape photography. But with halloween around the corner this project was perfect. It was also one of the funnest projects I have done while in photo. My inspiration for this photo is one of my favorite horror movies "Micheal Myers."



## Nadia Friedman



### *Still Beating*

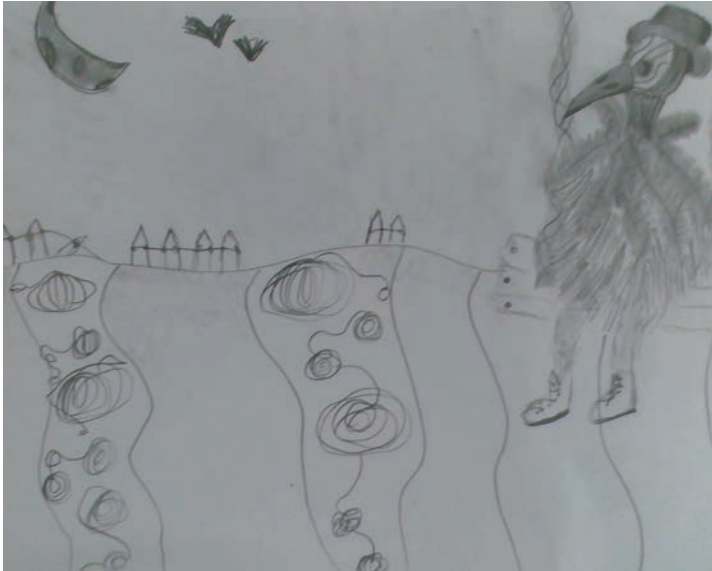
Photography, 2592 px x 3289 px  
Plainview Old-Bethpage JFK High School

### **Artist Statement:**

Halloween is my favorite holiday, the tricks, the treats, and especially the nightmares. For this photo, I wanted to make a nightmare come to life. This photograph shows an arm and hand holding a heart severed from a body, with blood splattered all around it. I shot this image with the intent of the viewer being able to interpret it as they please. Whether it simply be if the arm is severed as well, or is there any deeper meanings behind the composition. The inspiration behind the name of this image comes from a song called "Teeth" by 5 Seconds of Summer. The specific lyrics in the song say "heart in my hand, still beating", and from that I decided on "Still Beating". The song has a strong beat and their are some sinister lyrics in the song, fitting the Nightmare theme perfectly.



## Blair Meehan



*Cropsy*  
Pencil, 8.5" x 11"  
Plainview Old-Bethpage JFK High School

### **Artist Statement:**

The inspiration for my piece was the time of year. During this time of year, you would think of spooky and dark. So within this piece, I thought about what would spooky and dark look like and I drew it.



## Emely Hernandez



*Untitled*  
Mixed Media, 9" x 12"  
Ralph G. Reed Middle School

### **Artist Statement:**

Abstract art communicates what the artist is trying to say and express through the colors and shapes that the artist includes though not all abstract is the same: my art expresses feelings that others may hide such as guilt, sadness, and anger, anxiety, and regret. It expresses the real world.



## Andrea Gomez Mondragon



*Untitled*

Mixed Media, 9" x 12"

Ralph G. Reed Middle School

### **Artist Statement:**

What inspired me to make the art piece was how I used to draw on my hand and how I loved skeletons. Also my favorite color is purple and that is why the background is purple.



## Melanie Mejia



*The Escape*  
Mixed Media, 9" x 12"  
Ralph G. Reed Middle School

### **Artist Statement:**

The inspiration for this piece was North Korea and stories from people who escaped North Korea at a young age.



## Cadence Dondero



*Release to Death*

Digital, 500 px x 600 px

St. Patrick's

### **Artist Statement:**

I've always been intrigued by the image of the plague doctor. The image of the plague doctor to me invokes fear yet a calm feeling like all the pain your feeling is all going to go away. My art shows the plague doctor failing his job and is now handing the job over to death. The flowers are meant to represent the lavender they used to cover up the smell of the rotting bodied.





## Italia Lulu-Abad



*Watching Closely*  
Marker and Color Pencil, 12" x 9"  
Stimson Middle School

### **Artist Statement:**

What inspired me for my picture I drew was the things I myself was afraid of. I was afraid of darkness and being watched for my every move, so I incorporated that in my art piece. Another thing that used to scare me was the picture of momo so i took some inspiration from that too with the creepy mouth and big unnerving eyes.



## Lilia Aleman



*Bubonic Plague*  
Marker and Pencil, 12" x 9"  
Stimson Middle School

### **Artist Statement:**

My drawing is a girl that is starving and sick person looking up into a portal with a mask on wanting to go into another dimension to stop the disease and stop suffering from the bubonic plague.



## Matthew Santamaria



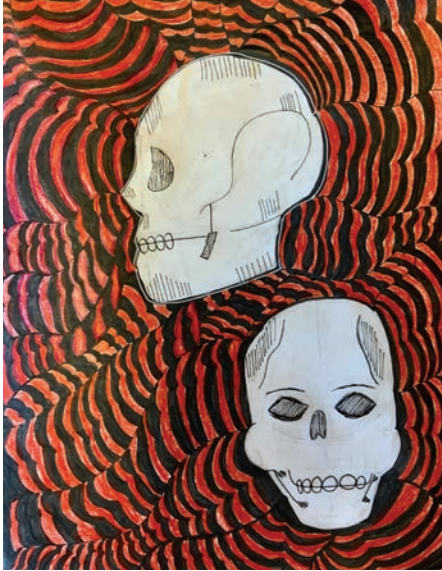
*Night Skull*  
Procreate and Pencil, 12" x 9"  
Stimson Middle School

### **Artist Statement:**

When I learned it was a halloween drawing I thought of a skull right away and I just thought of things to do with it. I thought the skull represented death so I hand drew the skull and hand, which I placed in the foreground of a graveyard. The moon was the highlight to create a scary setting.



## Emely Yanes Rivera



*Skull Ache*

Drawing Pens and Color Pencil, 12" x 9"  
Stimson Middle School

### **Artist Statement:**

My biggest inspiration when doing art is anatomy! I love studying it and I love how it goes in depth of our bodily structure, which is why I decided to name my artwork "Skull Ache"! It portrays what "happens" to the skull when having a headache. Headaches are caused by the following, lack of sleep, stress, loud noise exposure, or tight headwear! These happen because of our nerves, blood vessels, and muscles that cover a person's head and neck. All described, represent the red and black "Illusion" type of background!



## Parker Eisner



*En Fuego*

Photography and Photopea, 12" x 9"  
Stimson Middle School

### **Artist Statement:**

As part of my personal Halloween tradition, I like to carve interesting jack o'lanterns. This year, I decided to light my jack o'lantern on fire and photograph it at night. The inspiration for this was to watch the burning jack o'lantern and the fire as it burned and changed over time. This gave me many unique opportunities to try to capture different images in various stages over time, and in this example, to select the one that looked the scariest or spookiest in honor of Halloween.



## Caterina Zerillo



*Ghost*  
8.5" x 11"  
Syosset High School

### **Artist Statement:**

I make art as a way to express my views and feeling to others or just to create projects in my free time for fun. The message I would want to send to other people through my art is anybody can be anything and that art can be any way you interpret it. Different people are going to see art in different ways so it's okay if you have different opinion on a piece than somebody else. That's why I love to create art because it can be anyway you interpret and that's how art is inspiring for me.



## Isabelle Cao



*Ghastly Screams*  
Acrylic Paint on Canvas, 20" x 16"  
Syosset High School

### **Artist Statement:**

Memento mori was a symbol for one's last earthly moments, the last thing a person would see before meeting their death. A skull however, is the essence of death. The drips of blood and ghostly life being stripped of the physical body is the embodiment of all fear for the living, and yet is glorified in the holiday of Halloween. Is there still life behind those dark depressions of the skull that were once eyes? What are they searching for? Will they escape the curse of the damned or will they rise from the grave, on to conquer the next victims of Halloween?



## Griffin Gurewicz



*Dismembered*  
Digital, 13" x 19"  
Syosset High School

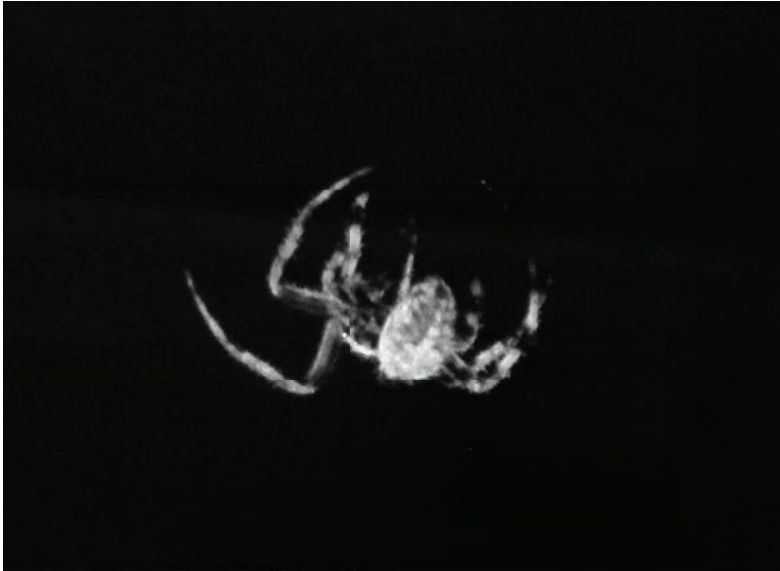
### **Artist Statement:**

In this piece I explored the ideas of dolls. Adults tend to get their kids dolls as ways to initiate creativity and show idealistic views of beauty. Most people see dolls as perfect and unscarred and the thought of a doll diminished and ripped apart can ignite a feeling of discomfort since dolls represent a humanoid.





## Loaghan Mangal



*Arachnophobia*  
Digital Photo, 8" x 10"  
Syosset High School

### **Artist Statement:**

The inspiration for the first photo was the theme of being ominous. The window surrounded by the old brick covered in vines shows a sense of abandonment and unknown to what is inside. Then the red paint fading from red to a pink on the outer edges helps create an uneasy feeling that I felt captured the atmosphere I wanted for the photo.

For the second print I wanted to explore the theme of frightening yet beautiful. I felt that the subject of a spider (a figure associated with fear) was fitting for this photo. By getting close up and capturing the legs and details of the spider itself shows the beautiful nature to the overall scary figure. For the final print I wanted to explore the theme of ominous again. The broken fence that leads to a wooded area created a sense of fear yet curiosity to see what's beyond. Combined with the clouds in the night sky, it seems very fast moving creating an anxious feeling surrounding the image.



## Giovana Ercolino



*The Pathway*  
Darkroom Photo, 8" x 10"  
Syosset High School

### **Artist Statement:**

My idea going into the picture was the mystery and loneliness that i felt in the moment which led me to taking the photo. I was walking home at night from the school and had to walk through a narrow fenced pathway. This image with its scenery and the area can let other viewers run wild with the meaning of this photo.



## Ella Nguyen



*Right Behind You*  
Digital Photo, 14" x 11"  
Syosset High School

### **Artist Statement:**

I wanted to capture the creepiness of the fall and Halloween. I was inspired by Halloween movies and the outdoors at night when it gets dark and cold.



## Sarah Zhou



*Unknown*

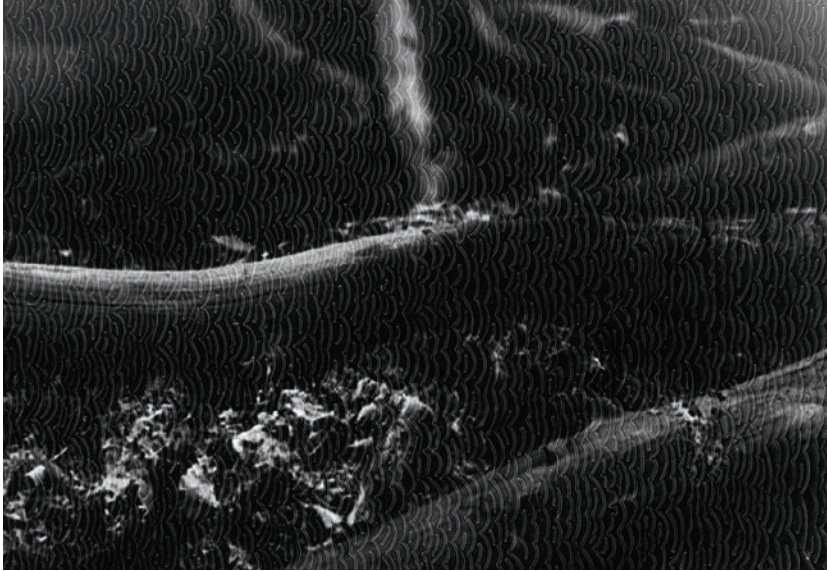
Digital Photo, 11" x 14"  
Syosset High School

### **Artist Statement:**

Throughout my art pieces I wanted to create something that could give someone shivers from looking at it but it wouldn't be too bad to the point someone is afraid of it. I wanted to create something calming but still gloomy and dark. Generally I wanted to hit the main idea of dark and gloomy but make it calmer.



## Constantin Grigoras



*Dead Branch*  
Darkroom Photography, 8" x 10"  
Syosset High School

### **Artist Statement:**

Learning about "Memento Mori" for the first time hit me. So, I wanted to find examples of "Memento Mori" in the creation. I grabbed my camera and with some help from my brother took pictures of scenes in my backyard of what seemed to bring "memento Mori" to life. I wanted my images to focus on dead objects surrounded by living things, reminding us that one day we will all go away. Memento Mori.



## Emily Young



*Untitled*  
Digital Photography  
Syosset High School

### **Artist Statement:**

Nightmare on Main Street can be interpreted multiple different ways. In my art, I explored this through dead flowers. In order to display this, I decided to color the water black.



## Natalie Maser



*Untitled*

Digital Photography, 11" x 14"  
Syosset High School

### **Artist Statement:**

The project Nightmare on Main Street can be interpreted in many different ways. I had the word ominous in mind when working on my photos. My artwork can have different meanings to everyone who sees it and can be interpreted differently.



## Grace Lu



*Unmasked*  
Charcoal, 22" x 17"  
Syosset High School

### **Artist Statement:**

For this piece, I created them with the idea of "creepiness" and "spookiness" in mind. I chose charcoal as my medium because I wanted to be able to create bold contrast. The inspiration behind the mask having a different appearance in the reflection of the mirror was the concept of how we oftentimes "mask" certain parts of our personalities and put on different personas when we are around other people, and, as a result of this, have a different perception of ourselves than others do.

"Penny for Your Thoughts": I constructed this still life to emphasize reflections in both glass forms and mirrors. I played with different colors of lighting, and the purplish one came out best. The photo itself looks reminiscent of a witch casting a spell.





## Riley Leavitt



*Glass Eye*  
Darkroom Photography and Scanography, 8" x 8"  
Syosset High School

### **Artist Statement:**

The inspiration for my first two pieces actually came from my friends. I have a tendency to roll my eyes back, only showing the whites of my eyes. I was told that it was extremely creepy and haunted looking. Then I decided to add glass to one and add color to the blood vessels in another. I feel as if it added to the lore. The inspiration for my third piece came to me as I was driving at night. The road was dark and empty, except for the light from the street lights and a single car. It felt very ominous so I decided to capture the moment.



## Leona Semenov



*Bill Ciphers Madness*  
Charcoal, 18" x 24"  
The Wheatley School

### **Artist Statement:**

The fear of the unknown and the madness around abnormalities served as the inspiration for the artworks. The first work was inspired by the strangeness and mystery of Gravity Falls, which was my favorite series as a kid. I believe that the fact that I felt so different from the other students in my class and had a strong desire to blend in made it easier for me to relate to the show. The detail of the skull was the main subject of the second work. Shakespeare and the skull he held in Hamlet kept coming to me as I was creating the piece. Both pieces show a contrasting idea behind the darkness in the unknown and the lurking evil in each.



## Powers Auletta



*One Life*  
Canvas, 20" x 16"  
Trinity Regional School

### **Artist Statement:**

I wanted to show the lighter and darker sides of life. The plague doctor shows darkness but I brightened his appearance with fun and light doodles.



## Aurorah Spencer



*Beyond The Shadows*  
Pencil and Charcoal, 12" x 14"  
Unionadle High School

### **Artist Statement:**

"Beyond The Shadows" is intended to show the continuous longing for life. Throughout this drawing, the shadows are seen wailing for attention and more specifically the light. While using pencils and charcoal I wanted to display the intensity, darkness, and depth that as a society many people can get caught up in the everyday cycle of searching for everything they want outside of themselves. This piece shows an active scene where a creature-like fortune teller, tells the customer's future as they have a collection of souls at hand. These souls can represent the countless amount of people who, knowingly or not, can get caught up in obsessing over heavily spiritual ideals.



## Monica Ortiz



*The Fear In Her Eyes*  
Photography, 8" x 10"  
Unionadle High School

### **Artist Statement:**

For this piece I was inspired by the series "Pretty Little Liars". In this series, one of the characters resembles a doll. Later on, she's found dead with her eyes open and makeup on to make it look like she wasn't murdered. In my piece, you can see a doll with her eyes open and red lighting. The red light represents death and how she felt during her last breaths.



## Michael Mendoza



*Final Moments*  
Photography, 8" x 10"  
Unionadle High School

### **Artist Statement:**

For this piece, I got inspired by the "The Texas Chainsaw Massacre" franchise and tried to replicate the horror the films gave me through just one single photograph. I created a collage of photographs where the killer is getting ready to kill the victim. To add to the horror, I overlaid a pie prop made out of "human flesh".



## Marjorie Martinez



*Pressure's Consumption*  
Mixed Media, 8" x 6"  
Unionadle High School

### **Artist Statement:**

While reading Lauren LaBella's statement I was inspired by the ideas such as "disguises" and "unmaskings". Originally the fear of losing yourself to alternative personalities was one I had in mind, however I focused on the fear of losing yourself to pressure. There comes a point where the feeling of pressure is too much to handle. The pressure of everything around you becomes so high it gets hard to control yourself. What I hoped to capture in this piece (with the use of water color pencils, acrylics and ink) is a sense of overstimulation of pressure that the girl can no longer handle as she feels she's stuck under and it now consumes her. The feeling is so strong that the only solution was an urge to rip her face off.



## Abigail Laureta



*The Sun and His Stars*  
Digital, 12" x 16"  
Unionadle High School

### **Artist Statement:**

When looking at Filipino folklore, I came across a myth about the Sun God, Apolaki, and dozens of stories surrounding him. Some stories were based around the Sun God doing some unethical things, such as killing his son and cutting him up into pieces, becoming the stars that we know today. I thought it was weird how the Sun God is called a god, even when stories about Sun Gods across the globe depict them as praised or holy. This piece depicts Apolaki and his son surrounding him and haunting him. Even though Apolaki is praised as a God, this doesn't mean he hasn't done wrong to people around him. I'd like to think that his two-facedness of being a God yet being brutal would come back to bite him as he regrets killing his son.





## Andrea Rivera Ramos



*SLOW DEATH*  
Mixed Media, 12" x 18"  
Unionadle High School

### **Artist Statement:**

Nobody knows what is happening inside. To be completely honest, if you ask me what my inspiration is, it's pretty possible that I would answer "I do not know". When I was working in the idea I was struggling because I am not a fan of scary or creepy movies, actually I never watched a horror movie so I thought an idea about any of my feelings or experiences that I can transform in a creepy draw. So I created "SLOW DEATH", this piece actually is very significant for my because this piece represent some of the feeling that I have. Sometimes I felt that I'm alive at the outside but I am dying in the inside so my artwork "SLOW DEATH" reflect the fact that your interior soul is slowly dying.



## Matteo Somma



*The Man Hiding Behind His Mask*

Ballpoint Ink, 15" x 10"

Valley Stream North High School

### **Artist Statement:**

The Pucinella, the man hiding his pain behind his smiles and his mask is an important attribute of Neapolitan history and culture. Often times we hid our true feelings for the hope of social acceptance just as the Pucinella does, turning us into monsters of our own nature. Walking through our days, holding emotion in hopes to not be questioned by the world around us, creeping through existing just observing, stalking the world around us. By capturing the Pucinella in art you can see its pain and sorrows of tomorrow.



## Kimberly Shrestha



*Drowning*  
Ballpoint Ink, 20" x 15"  
Valley Stream North High School

### **Artist Statement:**

My artwork illustrates the fear of sinking and drowning. While scary and often fatal, the process itself usually remains silent and calm. I tried to convey the quiet panic one experiences when unable to breathe or resist the weight of water. Although the piece itself does not come across as particularly frightening, the struggle between life and death is more horrifying than what meets the eye.



## Chamille Malcolm



*Frankenstein and His Bride*  
Ballpoint Ink, 10" x 15"  
Valley Stream North High School

### **Artist Statement:**

The inspiration for this piece came from my love for classic horror films, specifically, one of my favorites, *The Bride of Frankenstein*. While searching for references on the internet, I came across a few untitled works that showed Frankenstein's bride looking up to him while he's looking down at her. I decided to do something similar, I searched for a profile of Frankenstein's bride, and a profile of Frankenstein, I used images of the actor and actress from the actual film itself. My art teacher gave my class the challenge to make our pieces for this competition using only black ballpoint pen. While creating this piece, I used layering techniques, line art, as well as blending/smudging, which was done with my fingers. I enjoyed creating this piece mainly because I used pen, which is a media I've never really used in my art before.



## Nora Cherry



*They're Waiting*  
Ballpoint Ink, 12" x 16"  
Valley Stream North High School

### **Artist Statement:**

My art piece's purpose was to show the dark side of life, mainly the struggles that women go through. The struggle that many women go through is aging, not aging itself, but how society treats women who are no longer young. The thing about unrealistic beauty standards is that youth is a major part of it. Society tends to throw women away once they hit a certain age. A woman could have a sea of admirers that would disappear the second she's "past her prime", no matter how many times she tries to catch up or stay relevant.



## Arunima Roy



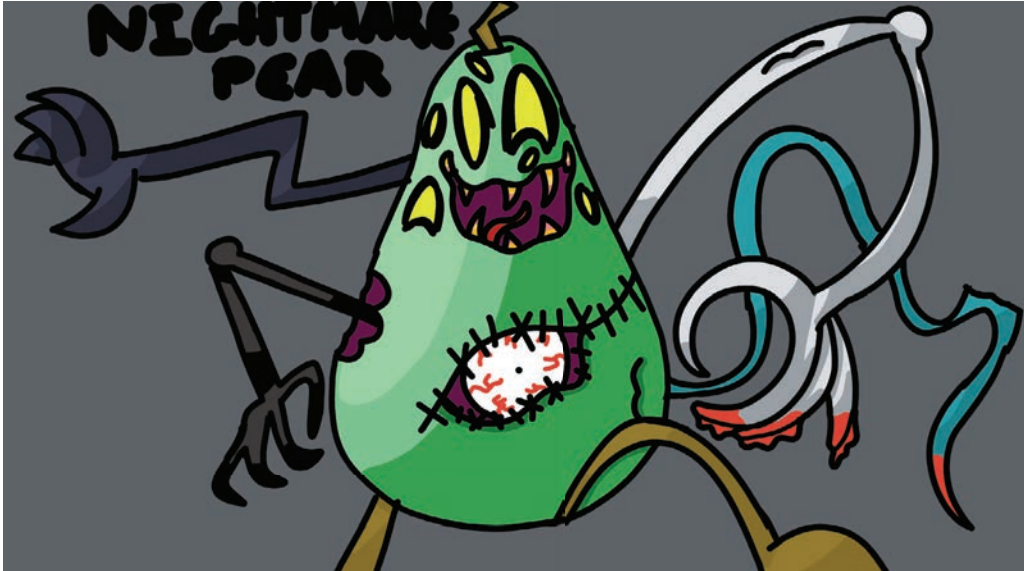
*Our World In Red*  
Mixed Media, 18" x 24"  
Valley Stream North High School

### **Artist Statement:**

Most of my pieces derive from my imagination and the the messages behind them tend to be very personal. The first piece is one that expresses the idea of not being able see yourself for who you have become and disguise yourself behind the shell of who you are. In the past years through the pandemic I had lost sight of who I was and fell into into an unhealthy mindset. Instead of finding ways to "recover" from this state, I pretended to be okay and hid behind a smile, as portrayed in this piece. The second piece is reflects the darker side of myself. It shows how I am not the person I put out to be with that smile but rather more broken. The vibrant red highlights darker thoughts through my head as I fell into more self destructive behaviors. Finally the third piece represents how I completely fell apart and used the mask to hide myself on a daily basis. Sure the pandemic was hard, but one thing that came out of it was that I never had to let anyone see myself- I could always disguise those emotions under the mask.



## Benjamin Glassmann



*Nightmare Pear*

8.5" x 14"

Walt Whitman High School

### **Artist Statement:**

My art is made with one of my more recent creation, "Pear," and taking some horror inspiration from some of my other characters to create a monster abomination. This was made in a half hour during the digital art club after school. Slowly add what you know what to draw and eventually you will create something great.



## Priscilla Grajeda Ramirez



*Street Doctor*  
Mixed Media, 10.75" x 10.5"  
Walt Whitman High School

### **Artist Statement:**

Well, the topic was the plague doctor. And I just imagined a plague doctor during the Black Plague going up and down the streets looking for dead people or sick people. I tried to make the building look like they are in medical times.





## Erica Chung



*Release*

Digital, 11" x 6"

Walt Whitman High School

### **Artist Statement:**

This piece was inspired by the traditional plague doctor and their connotations. Since death can be interpreted in many ways, I decided to pick two themes to add to the piece, angels and flowers.



## Eva Moreno



*Unknown Blood Doctor*  
Markers, 9" x 12"  
Walt Whitman High School

### **Artist Statement:**

The inspiration of my artwork is by the plague doctor nature. Villagers didn't know who to trust or how to be able to be cured, so plague doctors came by. To some they looked scary or useless unlike others who trusted them with their life. We think of plague doctors healing and taking care of the sick but what if they aren't as they seem?



## Kellen Anderson



*The Plague Doctor From The Circus*  
Color Pencil and Markers, 11" x 8.5"  
Woodhull Intermediate

### **Artist Statement:**

My inspiration for this piece is that the first article said that the Plague Doctor was a mascot for some circuses. With that being said I drew the Plague Doctor as one of those tall circus people. He is holding a lantern and a cane. The pants were inspired by fun circus colors and patterns but I kept it in the same color palette.